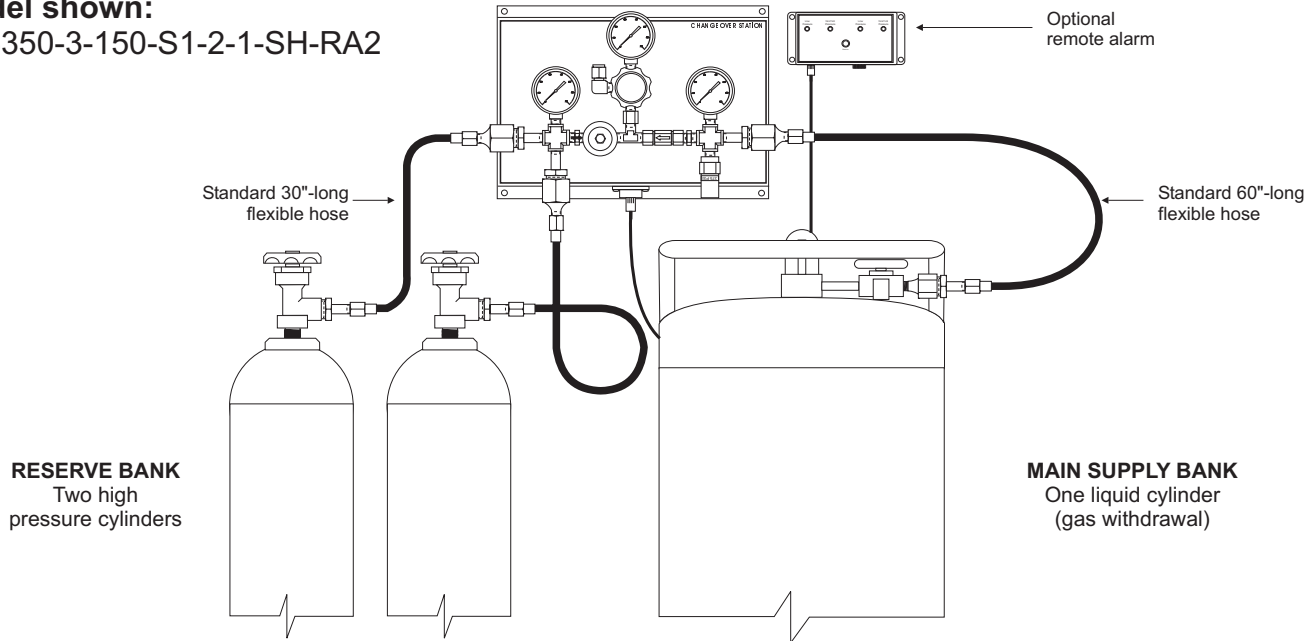




# SEMI-AUTOMATIC CHANGE OVER STATIONS

## SA3350 SERIES

**Model shown:**  
SA3350-3-150-S1-2-1-SH-RA2



### Description

The SA3350 Series Semi-Automatic Changeover Stations are designed to provide a back-up gas supply from high pressure gas cylinders where liquid cylinders are the primary source of high purity gases. The system activates the reserve bank when the liquid cylinder pressure drops below the preset pressure and deactivates when the liquid cylinder pressure rises above the preset pressure. Monitoring or operator adjustments are not required during the reserve bank activation or deactivation. The standard outlet regulator maintains constant line pressure even during the changeover process. The optional remote alarm box indicates when the pressure of each bank is either normal or low.

### Key Features

- Ideal for ICP or ICP/MS applications
- Automatically switches back to liquid cylinder side as a primary bank
- Longer flexible hose for the liquid cylinder
- Multiple high pressure cylinder back-up

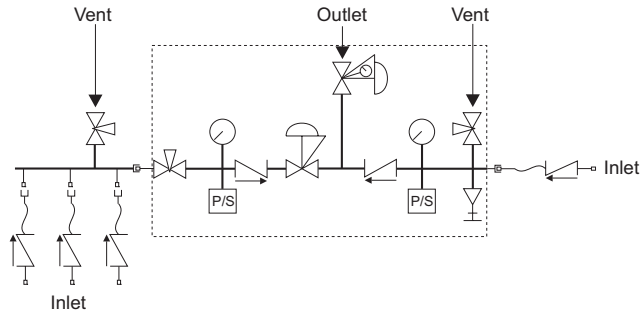
### How to order - part number matrix

SA3350							
<b>Series (inlet pressure)</b> Standard Series ■ = SA3350 3000 psi (Reserve) 350 psi (Liq. Cyl.)	<b>Fluid</b> ■ Argon = 3 ■ Carbon dioxide = 4 ■ Nitrogen = 7 ■ Oxygen = 9	<b>Outlet pressure</b> ■ 1-15 = 15 ■ 2-25 = 25 ■ 2-50 = 50 ■ 5-100 = 100 ■ 5-150 = 150  Other: please specify	<b>Regulator</b> ■ Brass = B1 regulators ■ Stainless = S1 steel regulators	<b>High pressure bank (Max. 6)</b>	<b>Liquid cylinder bank (Max. 2)</b>	<b>Flexible hoses</b> ■ Thermoplastic = NH (Nylon) steel fittings ■ Teflon core, brass fittings, S/Steel braid = TH ■ All stainless steel = SH	<b>Options</b> ■ Standard alarm = RA2 ■ Wireless alarm = RF2 ■ Vent valve = VV ■ Hose armor guard = AG ■ Zipnut Q/C = QC ■ Hand tight nut = HT

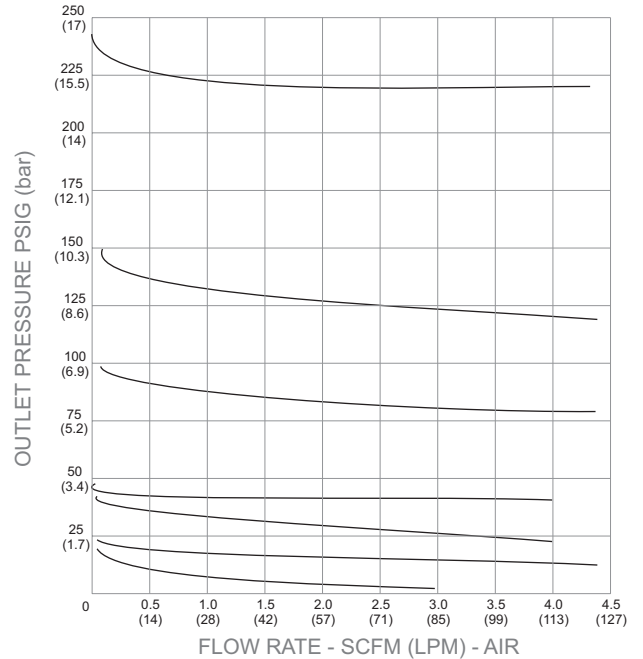


# SEMI-AUTOMATIC CHANGEOVER STATIONS SA3350 SERIES TECHNICAL SPECIFICATIONS

**Flow schematic**



**Flow chart**



## Standard specifications and materials of construction

Model	SA3350 Series Brass construction	SA3350 Series All stainless steel construction
Maximum inlet pressure	Left: 3000 psig / Right: 350 psig	Left: 3000 psig / Right: 350 psig
Outlet pressure range	See part number matrix	See part number matrix
Inlet connection fitting	Gas related brass CGA nut & nipple	Gas related type 316 stainless steel CGA nut & nipple
Gas service outlet connection	1/4" compression S/S	1/4" compression S/S
Vent valve outlet connection	1/4" M.NPT	1/4" M.NPT
Operating temperature	-40°F to 140°F	-40°F to 140°F
Pressure gauge dial & material	2"-dial, brass	2"-dial, type 316 stainless steel
Fitting size & material	1/4" NPS, brass	1/4" NPS, type 316 stainless steel
Pressure regulator		
Body	Brass bar stock	Type 316L stainless steel sar stock
Diaphragm	Type 316L stainless steel	Type 316L stainless steel
Filter	10-micron Nickel-plated sintered bronze	40-micron Type 316L stainless steel
Seats	PCTFE	PCTFE
Seals	Teflon	Teflon
Vent valves		
Body	Forged brass UNS 37700	Type 316 stainless steel
Seats	Nylon, Zytel 101 or Celanese 1000-1	PFA
Seals	Virgin Teflon	PFA