



Western's medical manifold systems provide uninterrupted gas service throughout the cylinder bank changeover cycle. Patient care and all hospital systems will benefit from automatic changeover from "primary" to "secondary" gas supplies. Centralized gas supply through a gas distribution system allows more efficient cylinder handling; significantly lowering the healthcare facility's cost. Western manifold designs minimize required space and are in compliance with NFPA-99 2002 edition. All systems are user friendly, making them easy to operate. For the semi-automatic systems, manual resetting of the control valve is required after changeover and cylinder replacement. All functional components and factory set calibrations are protected inside a tamper-resistant case. The FHM2 and HGM2 systems feature digital display of the line and cylinder bank pressures; the AGM2 system utilizes pressure gauges with through view of line and cylinder pressure. A visual alarm system is contained within the control cabinet. A green light (HGM2 and AGM2 systems) indicates the primary bank is functioning and the secondary bank is ready for service (FHM2 utilizes a yellow light). A red light indicates one or both of the banks are not ready for service. A circuit board in the power supply box has dry contacts for hook-up to all remote alarms regardless of voltage (up to 3 amps 30 VDC or 2 amps 250 VAC).

### ***Specifications:***

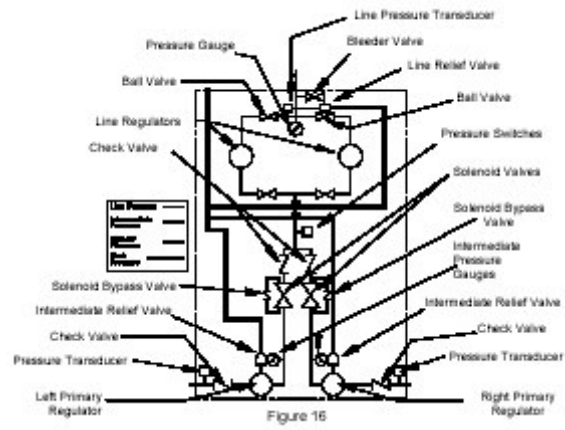
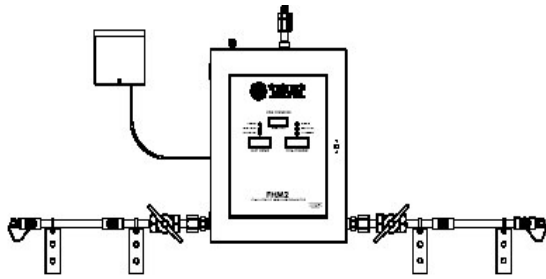
- All functional components (e.g. regulators, pressure switches, check valves) are enclosed in a tamper-resistant metal case 21" H x 16" W x 10"D.
- Internal adjustable dual line regulators.
- Manifold outlet is ½" NPTM.
- 24" pigtails with permanent CGA end connections and check valves; copper standard for oxygen. A check valve is located at cylinder end of pigtail for all gases.
- High quality master valves and individual header check valve outlets.
- System alarms lights with power supply box. Green light indicating system normal and red light indicating bank depletion.
- Digital readout can display PSIG, KPa, or Bar (FHM2 and HGM2 series)
- Cabinet weight: 65 lbs
- Headers are a single unit design constructed of ½" brass pipe and tees, silver brazed at each connection, painted almond and labeled for the indicated gas service. All brazing is completed by operators certified to ASME Section IX.
- Maximum inlet pressure: 3000 psig (2000 psig for HL systems, i.e. system contains heater)
- Relief valve outlet is ½" NPTM.
- Complete with wall mounting hardware and operating instructions.
- Built to accommodate future expansion by adding header extensions.
- Special header configurations available upon request for nominal extra charge – dimensional sketch of installation required.
- Made in the U.S.A.

***Selected System:*** \_\_\_\_\_

***Reference:*** \_\_\_\_\_

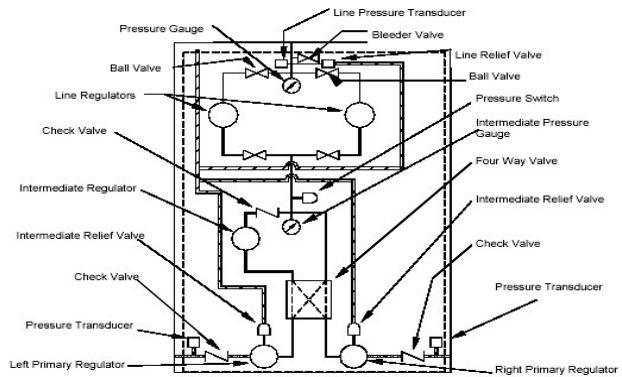
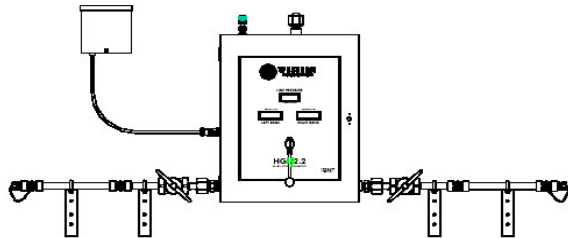
**Design and Flow Capacity:**

**FHM2 Series System – Fully Automatic**



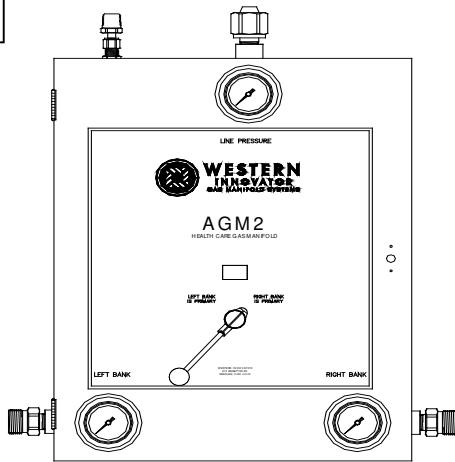
Designation	Gas	Adjustable Delivery Pressure Range	Operating Temperature Range
FHM2	Air, Oxygen	30 – 70 psig	-20° F – 120° F
FHM2HL	Carbon Dioxide Nitrous Oxide	30 – 70 psig	20° F – 120° F
FHM2HP	Nitrogen	100 - 190 psig	-20° F – 120° F

**HGM2 Series System - Automatic**



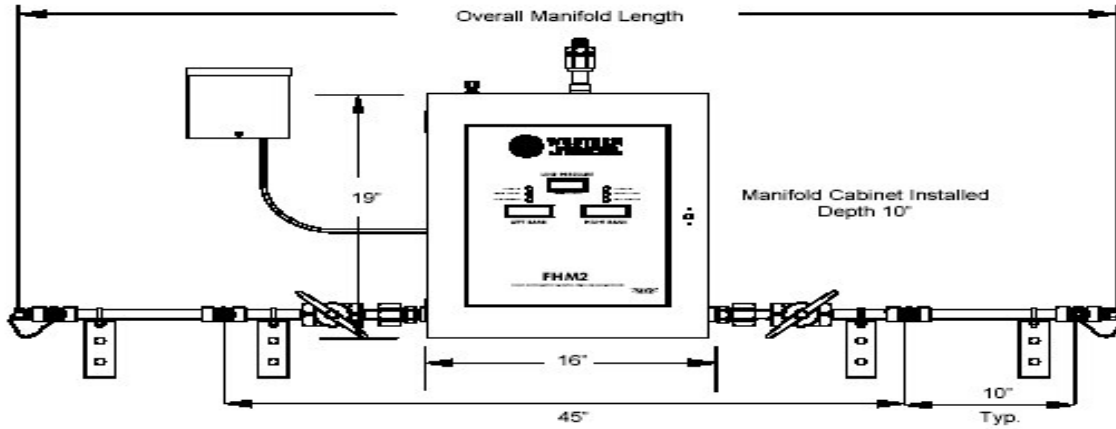
Designation	Gas	Adjustable Delivery Pressure Range	Operating Temperature Range
HGM2	Air, Oxygen	30 – 60 psig	-20° F – 120° F
HGM2HL	Carbon Dioxide Nitrous Oxide	30 – 60 psig	20° F – 120° F
HGM2HP	Nitrogen	100 - 200 psig	-20° F – 120° F

**AGM2 Series System - Automatic**



Designation	Gas	Adjustable Delivery Pressure Range	Operating Temperature Range
AGM2	Air, Oxygen	30 – 60 psig	-20° F – 120° F
AGM2HL	Carbon Dioxide Nitrous Oxide	30 – 60 psig	20° F – 120° F
AGM2HP	Nitrogen	100 - 200 psig	-20° F – 120° F

**Design Lengths:**

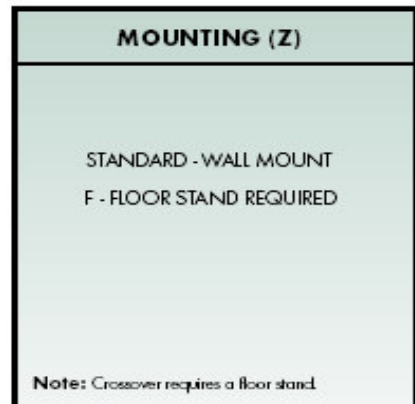
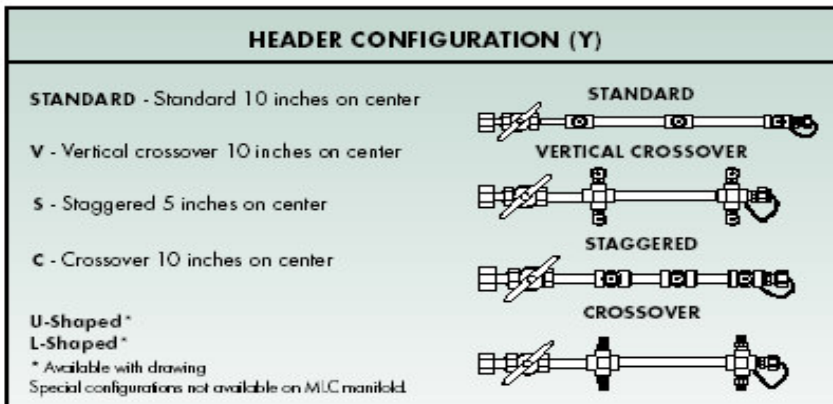


Total Number of Cylinders	4	6	8	10	12	16	20
Standard (10" centers) Overall manifold length	5'-8" (1.73m)	7'-4" (2.24m)	9'-0" (2.74m)	10'-8" (3.25m)	12'-4" (3.76m)	15'-8" (4.78m)	19'-0" (5.79m)
Staggered (5" centers) Overall manifold length	4'-10" (1.47m)	5'-8" (1.73m)	6'-6" (1.98m)	7'-4" (2.24m)	8'-2" (2.49m)	9'-10" (3.00m)	11'-6" (3.51m)
Vertical Crossover (10" centers) Overall manifold length	4'-0" (1.22m)	N/A	5'-8" (1.73m)	N/A	7'-4" (2.24m)	9'-0" (2.74m)	10'-8" (3.25m)

**How to Order:**

**Control Type (V) – Gas Service (W) – Number Cylinders (X) – Header Configuration (Y) – Mounting (Z)**

Control Type (V)	Gas Service (W)	Number of Cylinders (X)
FHM2 (30-70 psig) HGM2 (30-60 psig) AGM2 (30-55 psig)	(2) Breathing Air CGA-346 (4) Carbon Dioxide CGA-320	Indicate the total number of cylinders for manifold system on order.
FHM2HL (30-70 psig) HGM2HL (30-60 psig) AGM2HL (30-55 psig) [for CO <sub>2</sub> and N <sub>2</sub> O includes 500 scfh heater]	(7) Nitrogen CGA-580 (8) Nitrous Oxide CGA-326	
FHM2HP (100-190 psig) HGM2HP (50-200 psig) AGM2HP (50-200 psig)	(9) Oxygen CGA-540	



Example: FHM2-9-12VF

Represents a fully automatic manifold for 12 oxygen cylinders with vertical crossover headers and floor stand.

Example: HGM2HP-7-6

Represents an automatic manifold for delivery between 100 - 200 psig for 6 nitrogen cylinders wall mounted.

**ENTERPRISES INNOVATOR MEDICA WESTWINDS**

875 Bassett Road Westlake, OH 44145-1142 TEL 440.871.2160 FAX 440.871.2197